



东莞市锐益汽车电子科技有限公司  
DongGuan Reality Vehicle Electronic Co.,Ltd

地址：东莞市厚街镇赤岭莞太路6号

Address: 6#,Guantai Road,Chiling Industry, Houjie Town,DongGuan City, GuangDong Province,China

TEL:+86 0769-85752999 FAX:+86 0769-85752161

最大速度: 600°/sec

High speed rotation: 600°/sec

最小步进角度: 1/12°

High micro-step resolution: 1/12°

工作电压: 3.5-10V

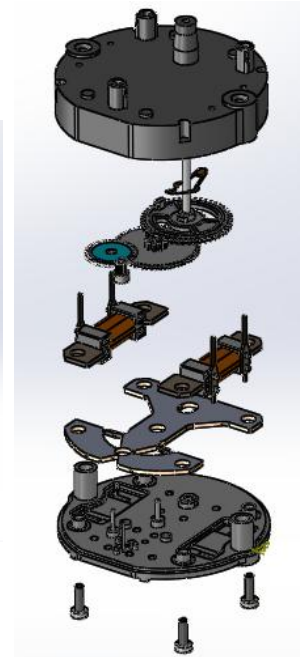
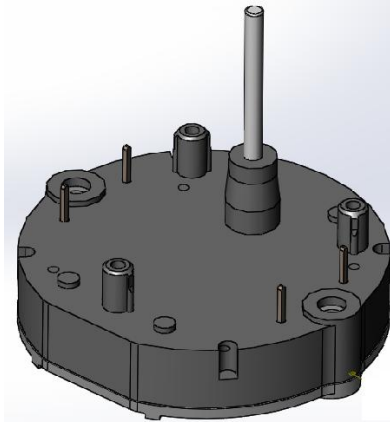
Wide working voltage: 3.5-10V

低能耗

Low current consumption

电机尺寸:  $\Phi 30\text{mm} \times 7.5\text{mm}$

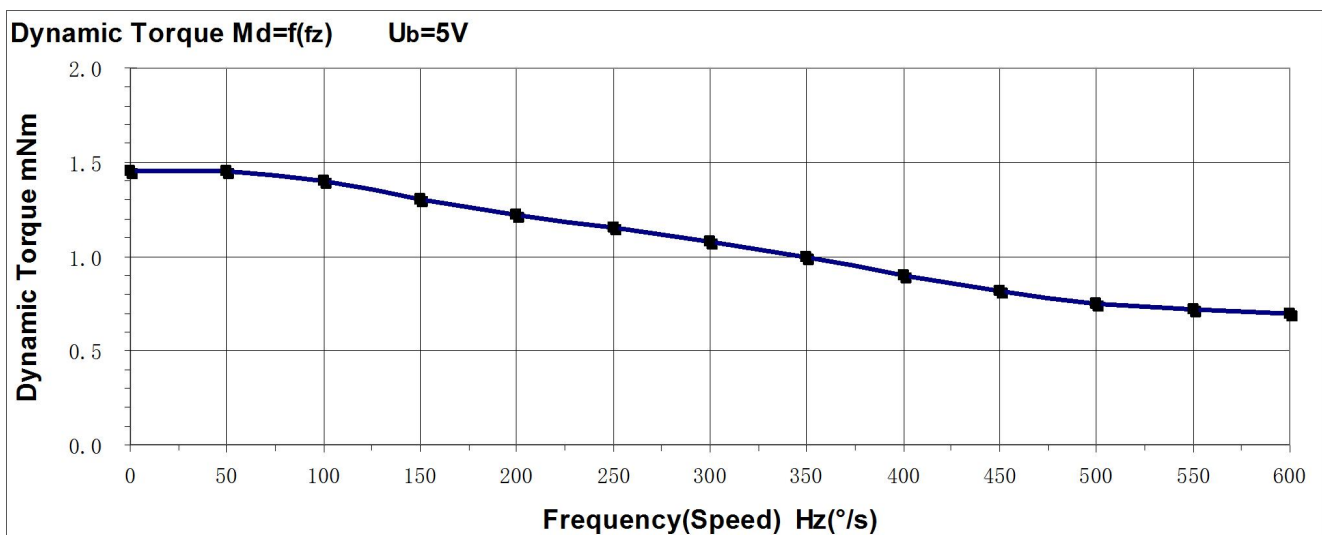
Small dimension:  $\Phi 30\text{mm} \times 7.5\text{mm}$



**RY29-07**

扭力曲线图

Dynamic torque (mNm) on shaft





东莞市锐益汽车电子科技有限公司  
DongGuan Reality Vehicle Electronic Co.,Ltd

地址：东莞市厚街镇赤岭莞太路6号

Address: 6#,Guantai Road,Chiling Industry, Houjie Town,DongGuan City, GuangDong Province,China

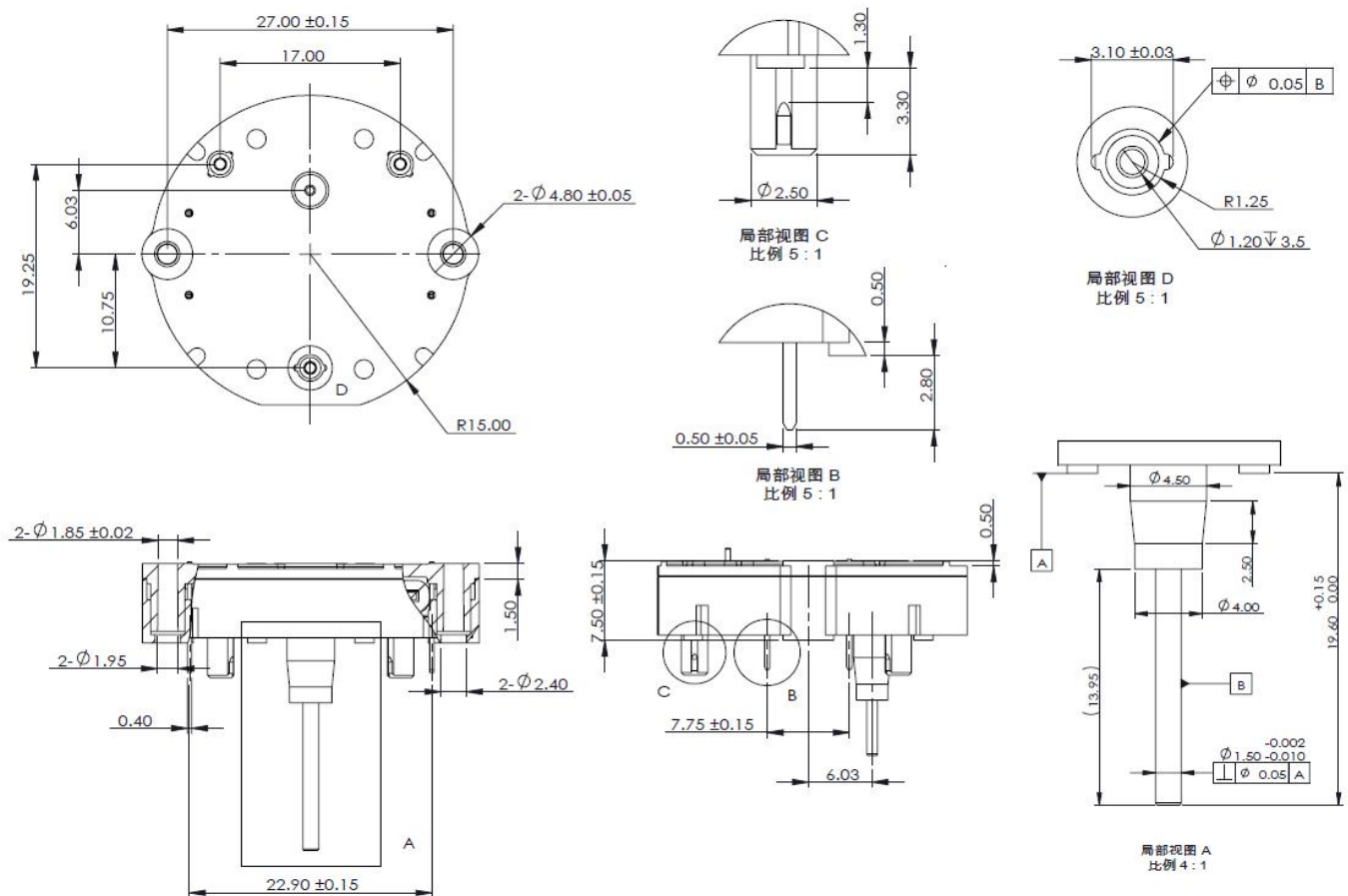
TEL:+86 0769-85752999 FAX:+86 0769-85752161

### 尺寸装配图

All dimensions in mm.

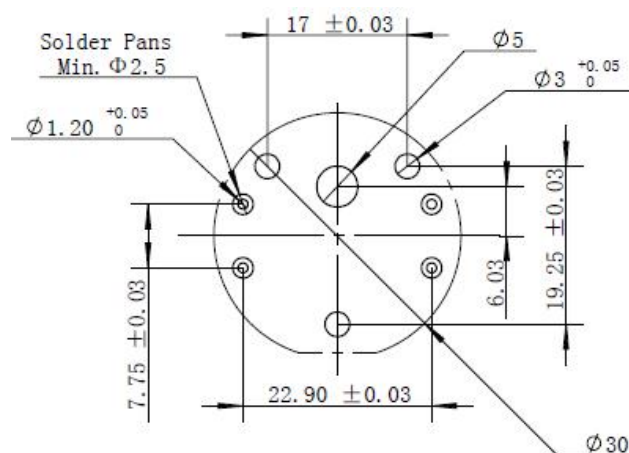
背装

Rear Mount:



### PCB 尺寸建议

Suggest PCB dimensions





### Electrical and Mechanical Characteristics 电气与机械特性

Parameter 参数		Test Condition 测试条件	Min. 最小值	Typ. 典型值	Max. 最大值	Unit 单位
Operating Temperature	工作温度	Temperature 温度: 25°C±3°C Humidity 湿度: 65%±15%	-40	-	105	°C
Resistance	线圈电阻		260	280	300	Ω
Operating Current	驱动峰值电流		-	15	20	mA
Start-Stop Frequency	启停频率	*J <sub>L</sub> =2.0X10 <sup>-7</sup> kgm <sup>2</sup>	-	-	200	°/sec
Max.Driving Speed	最高速度		-	-	600	°/sec

Gear Ratio	齿数比		-	1:180	-	-
Full Step Size	全步角度		-	1	-	Degree
Parital Step Size	分步角度		-	1/3	-	Degree
Micro Step Size	微步角度		-	1/12	-	Degree
Motor Inertia at Output	马达惯量		-	-	4.36E-7	kgm <sup>2</sup>
Backlash	齿隙回程差		-	0.7	1.0	Degree
Rotational Angle	转动角度		-	330	-	Degree
Noise	噪音	@200 °/s	-	39	-	dB(A)
		@400 °/s	-	43	-	dB(A)

Holding Torque @ 5V	保持扭力(5V)		3.5	4.0	-	mNm
Acceleration of sinus vibration test	振动测试	Pointer inertia load 0.2XE-6 kgm <sup>2</sup>	-	-	8	g
Axial Force - Push On	轴向压力	Test Method 测试方法	-	100	120	N
Axial Force - Pull Off	轴向拉力		-	70	80	N
Perpendicular Force	横向力		-	-	12	N
Stoper External Torque	挡点保持力		-	-	80	mNm
Soldering Temp.	焊接温度	Max. 5 sec.	-	-	290	°C

#### 备注 Remarks:

1. 测试条件：温度：= 25°C，工作电压 5.0V，微步模式驱动。

Testing Conditions : Temperature = 25°C, in u-step mode @ max. voltage 5.0 V.

